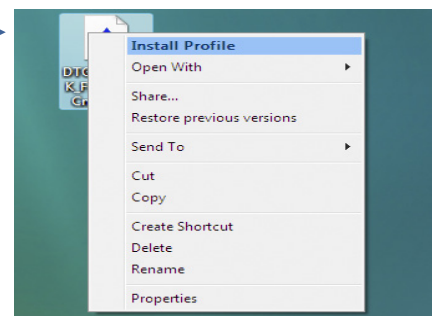


The following instructions will guide you through the process of printing color images through Adobe Photoshop CS3 or CS4 on a Windows operating system. Before we begin with the step by step guide, let's describe how to install ICC profiles as well as clarify DTG's nomenclature for our ICC profiles.

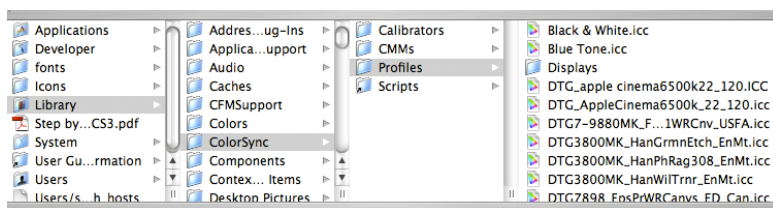
Installing ICC Profiles on a Windows System:

1. Download or copy the ICC profile to your desktop or other location on your computer.
2. Right click the ICC profile and left click "Install Profile". That's it!



Installing ICC Profiles on a Macintosh:

1. Download or copy the ICC profile to your computer.
2. Copy the profile to the following folder:
Macintosh HD/Library/Colorsync/Profiles



Interpreting DTG's Profile Names

Due to file name length limitations we must abbreviate many parts within the profile's name. We have tried to be very consistent in naming our profiles so look for this pattern: They always begin with the letters "DTG", followed by the printer model(s), followed by the black ink type (only if matte black is used), followed by the media name, finishing with the media setting you should set the driver to.

Example 1: DTG4880MK_HahnSmPhtRg308_USFA.icc

This is for an Epson **4880** printer using **Matte Black** ink, for **Hahnemuhle Smooth Photo Rag 308gsm**, and the media setting in the Epson driver should be set to **Ultra Smooth Fine Art Paper**.

Example 2: DTG7898_Frd777Cnvs_Canvas.icc

This is for an Epson **7800** or **9800** printer using **Photo Black** ink (because there is no MK referenced in the name), for **Fredrix 777 Canvas**, and the media setting in the Epson driver should be set to **Canvas**.

Please Note: In some of our older profile names you may see the letters "ED". ED stands for Epson Driver and these letters are really unnecessary as all of our profiles are for the Epson driver unless we specify otherwise.

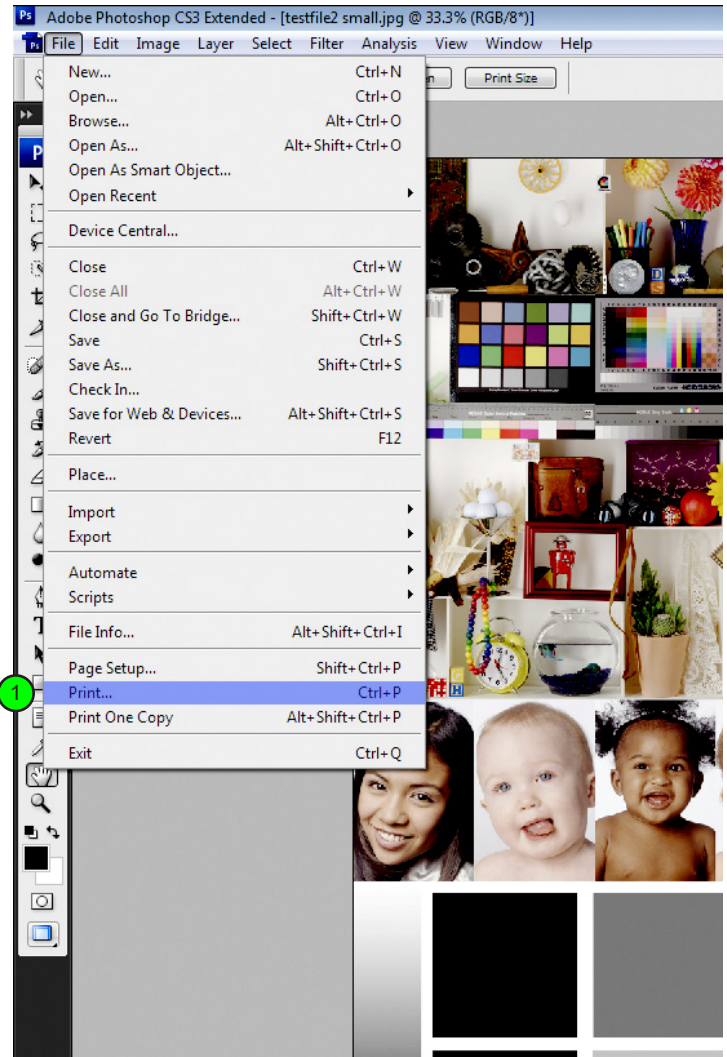
Also Note: All of DTG's Epson ICC profiles are created for 1440x720 DPI printing resolution unless otherwise noted at the end of the profile name.

Please continue on to the following pages for a step by step process in printing color images from Adobe Photoshop CS3 or CS4 on a Windows operating system.



Launch Adobe Photoshop and open the image file you wish to print. At this point we are assuming that you have made all of your color corrections to the image that you want and that you have sized it to your desired output size in the Image Size dialog.

1. Go to the File Menu and choose Print...

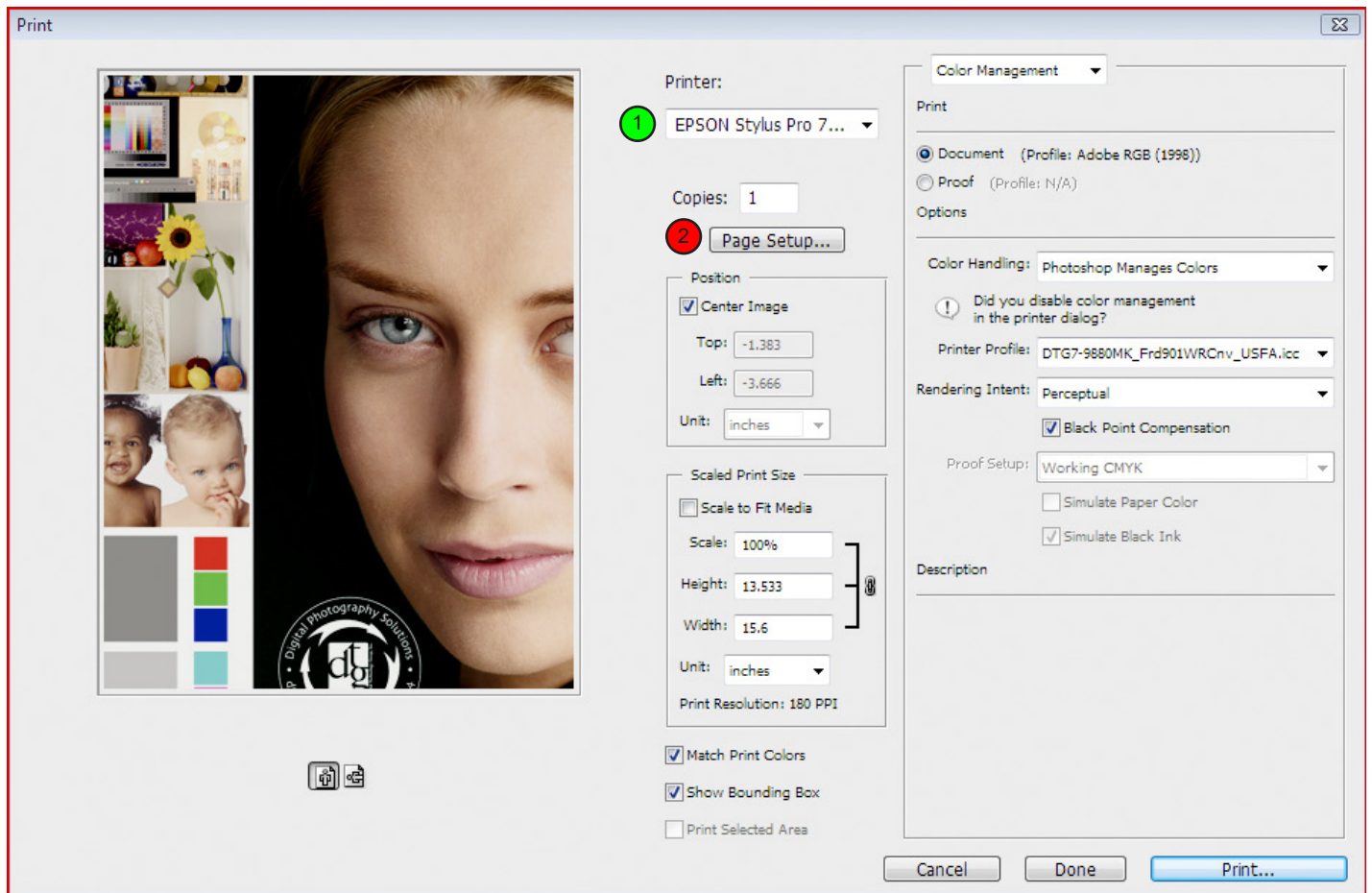


Epson Printing - Photoshop CS3 or CS4 on Windows

Page: 3

After you've selected Print, Photoshop's main print dialog box will pop up. Notice that your image may or may not fit within the default page size (usually letter size). In the example below, the image size is roughly 15.6 inches wide by 13.5 inches tall, so it's being "clipped" by the smaller 8.5x11 page size. Therefore, we need to select a larger page size.

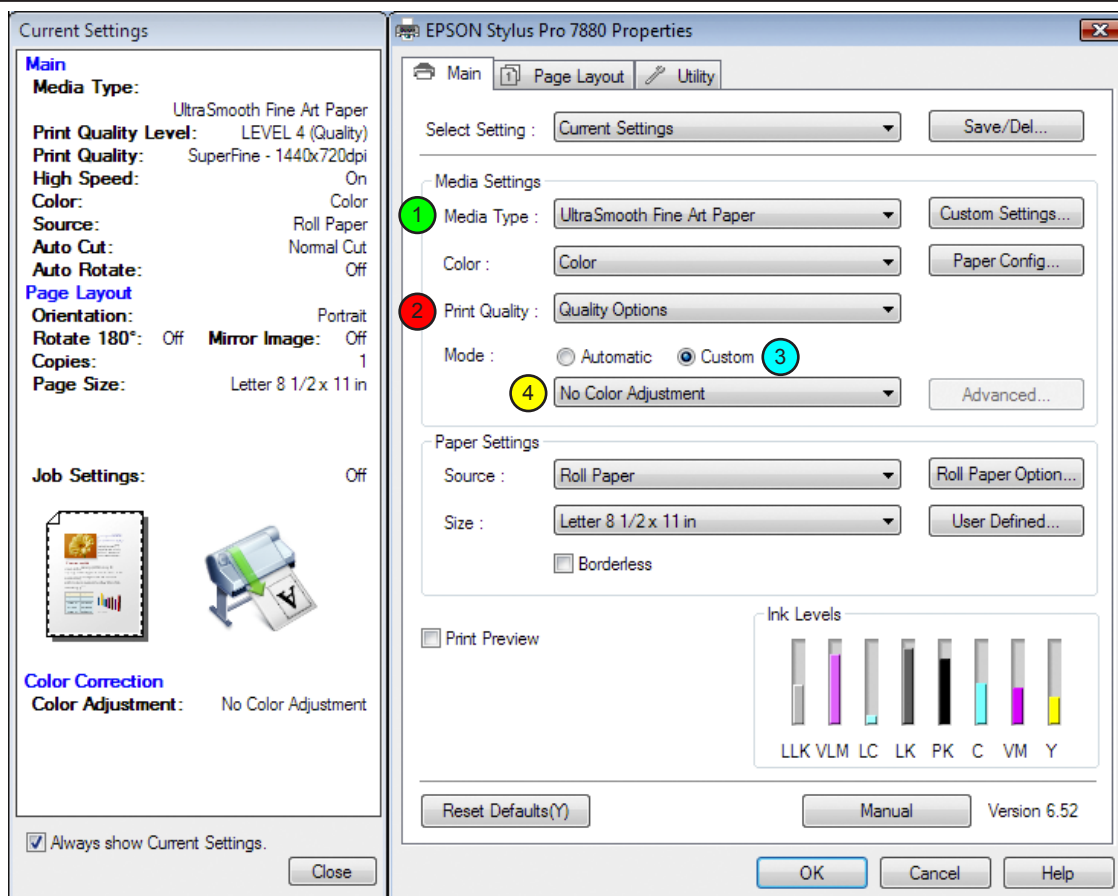
1. If it's not the currently listed printer, click on the Printer drop list and select the Epson model you are printing to from the list of printers.
2. Click the Page Setup button so that we can select a proper page size. We will also set our driver specific settings for media, quality, and other options.



After you clicked Page Setup on the previous page, the printer's properties window will come up as shown below. Before we set our page size and paper settings in this dialog box, let's set our media, quality, and mode settings.

1. Select the correct media type. This is extremely important in achieving accurate color. You need to choose the media type that matches the setting in the ICC profile that you are using. Please refer to page one of this document for further information.
2. Set your Print Quality to "Quality Options". Once you select quality options a dialog box will pop up. Slide the slider to position 4 or until the print quality reads "Superfine - 1440x720 dpi". Check the "High Speed" option and do not select "Edge Smoothing" or "Finest Detail".
3. In the "Mode" Section select "Custom".
4. Select "No Color Adjustment" in the drop list under "Custom".

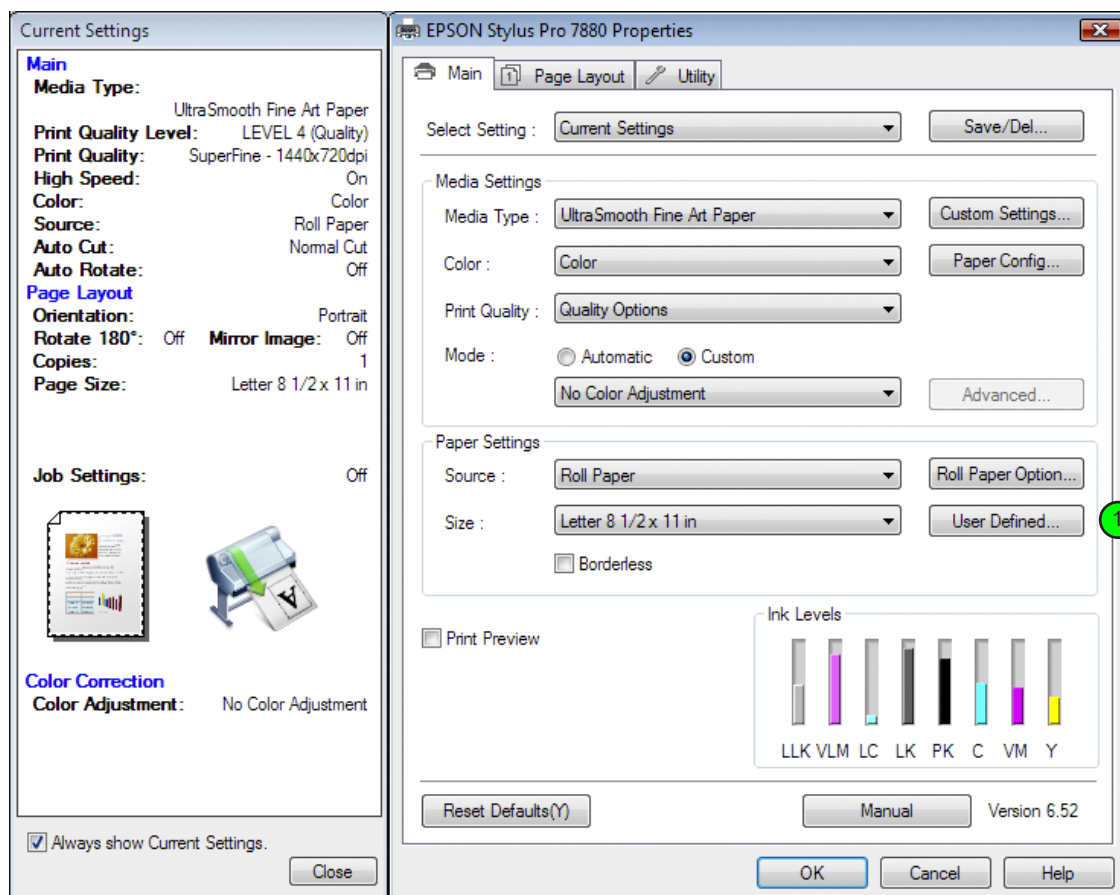
Do NOT Click OK yet!!!



On this same Printer Properties window we can set our page size. You can select from a preset size list or create your own custom size. Our image in this example is an odd size - 15.6 inches wide by 13.5 inches tall so we will create a custom page size.

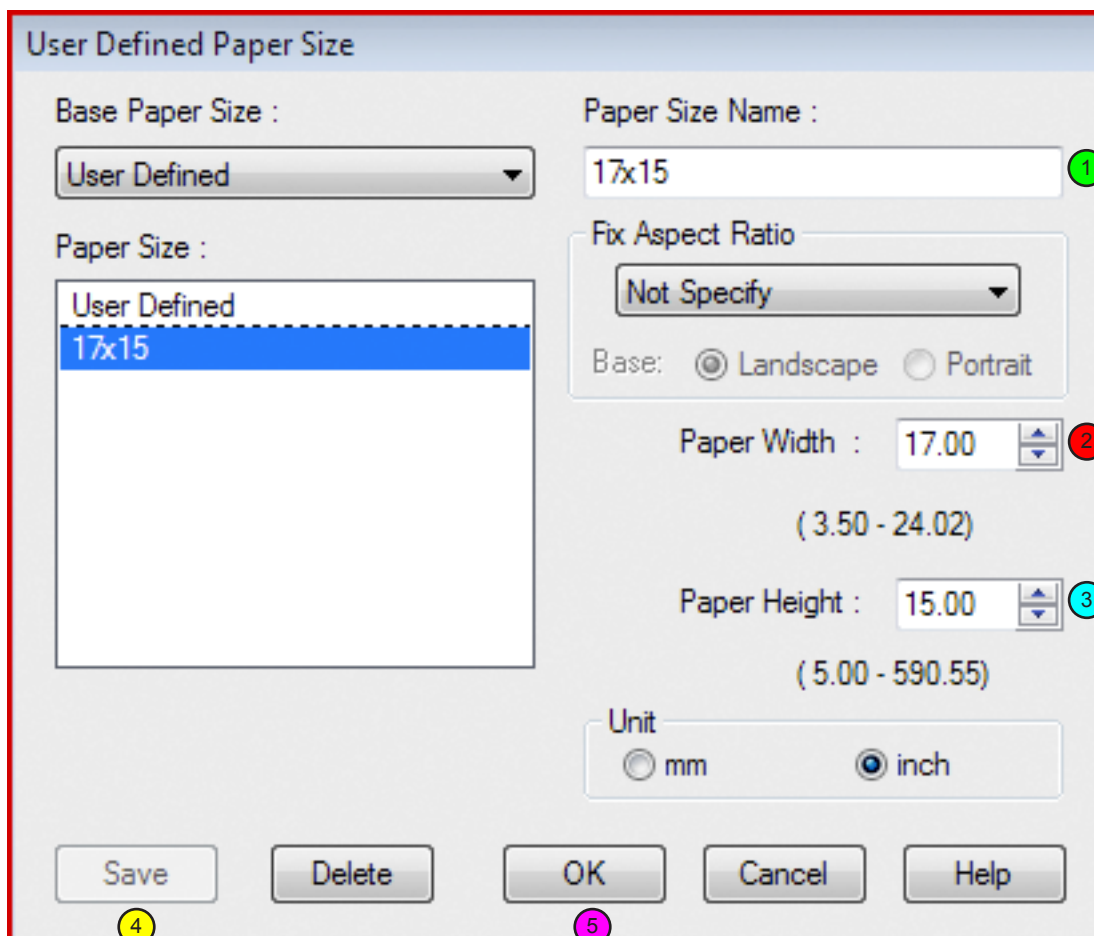
1. Click on the User Defined button next to the Size drop list in the Paper Setting Section.

** Please note that in choosing a paper size you do not need to select the size of the roll of paper that you have loaded in the printer. You just need to select or create a large enough page size that fits the image size of the file that you are trying to print.*



Once you click the User Defined button you will be brought to the following dialog where you can specify your own custom paper size.

1. Click inside the Paper Size Name box and change the name from “User Defined” to a name that corresponds to the size of the custom paper that you are creating. In this case we named it “17x15”.
2. Type in your desired paper width.
3. Type in your desired paper height.
4. Click the Save Button.
5. Click OK

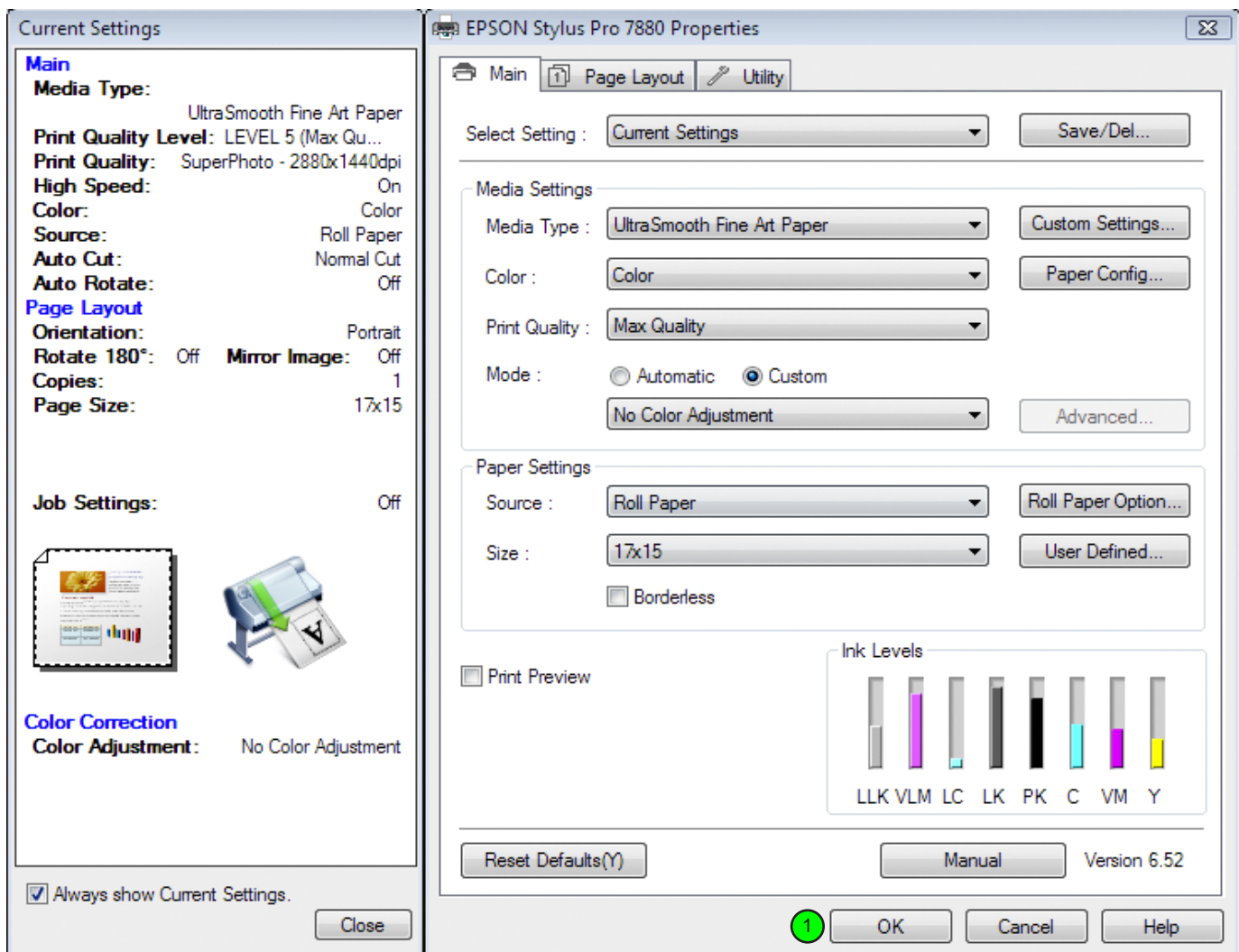


Epson Printing - Photoshop CS3 or CS4 on Windows

Page: 7

Notice that the page size you just created is now showing in the Size: drop list. We are now finished with this properties box.

1. Click OK

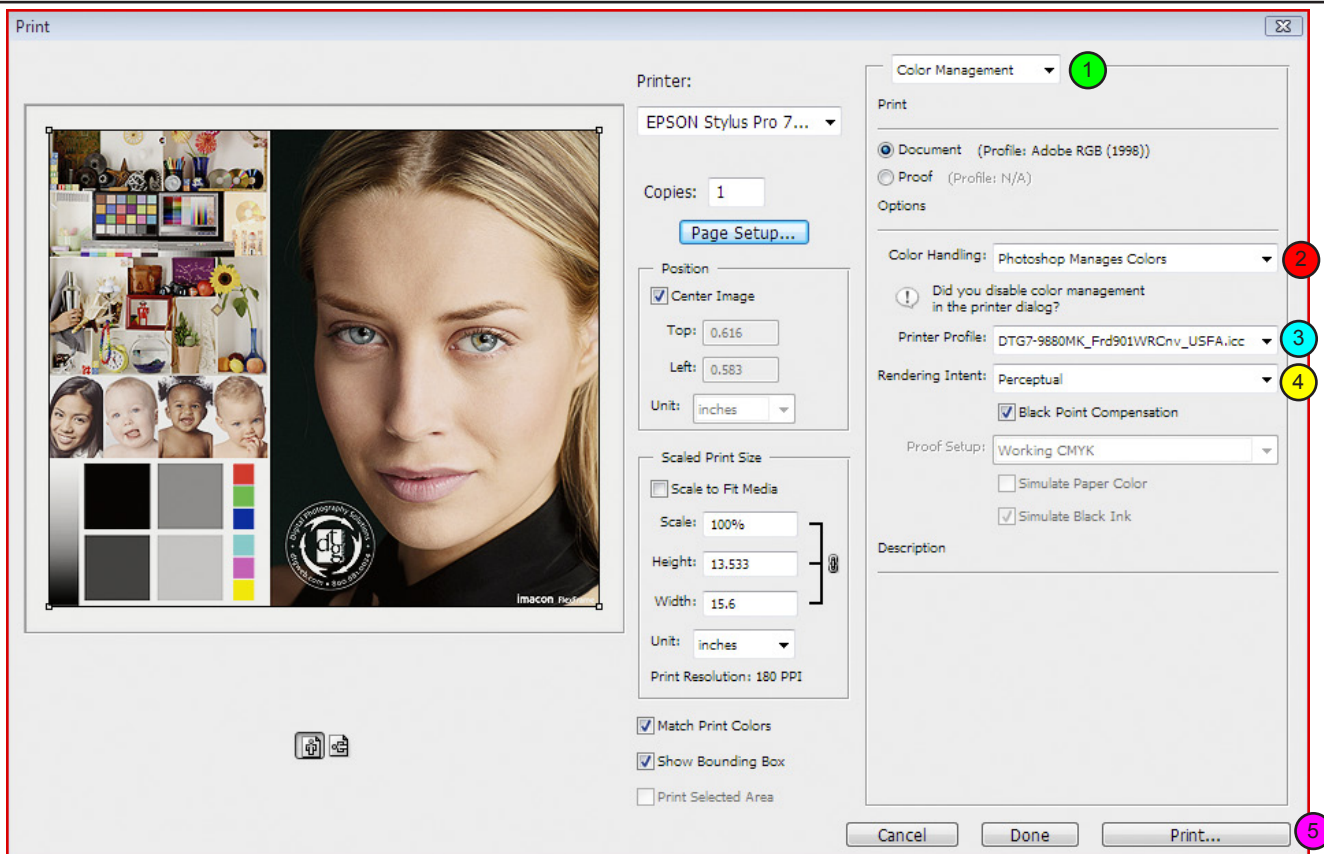


Epson Printing - Photoshop CS3 or CS4 on Windows

Page: 8

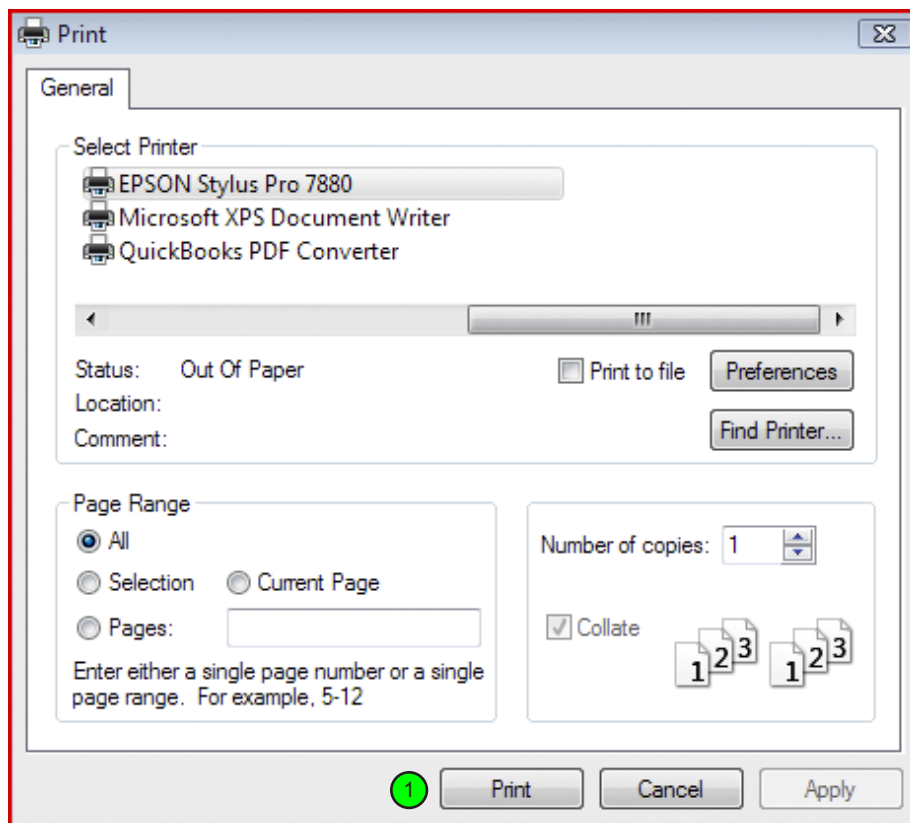
Once you exit the Printer Properties box you are back to Photoshop's Print dialog box. Notice that our image is not being clipped or cut off now that we've selected the proper page size. Now, we will set our color management specific settings in this dialog box.

1. Make sure you select "Color Management" from the drop list in the upper right. The choices are Output and Color Management.
2. Choose "Photoshop Manages Colors" from the drop list under Color Handling.
3. Choose the appropriate ICC profile from the printer profile drop list. This profile is specific to your printer, inkset, and the paper or media you are printing to. In the below example we will be printing to an Epson 7880 printer with matte black ink on Fredrix 901WR Canvas.
4. Choose a Rendering Intent: We recommend Perceptual or Relative Colorimetric. Either choice can subtly affect the output density or colors. Check Blackpoint Compensation.
5. Click the Print Button.



Once you click Print, a Windows specific print box comes up as shown below.

1. Click Print.





We hope that this has been a helpful guide to you in your efforts in producing beautiful, color accurate prints on your Epson printer. If you have any further questions please do not hesitate to contact DTG at 800.681.0024. You can also visit our support page on our web site at <http://www.dtgweb.com/support>