

Epson Edge[®] Print

Workflow Software

Software Overview Information
September 16, 2019

Epson Edge Print

Workflow Print Software



Epson Edge Print

- Easy to use, intuitive interface
- Adobe® Postscript® 3™ Engine
- Power features including Job Nesting, custom spot color libraries, pattern repeats, and more.

Epson Edge Print

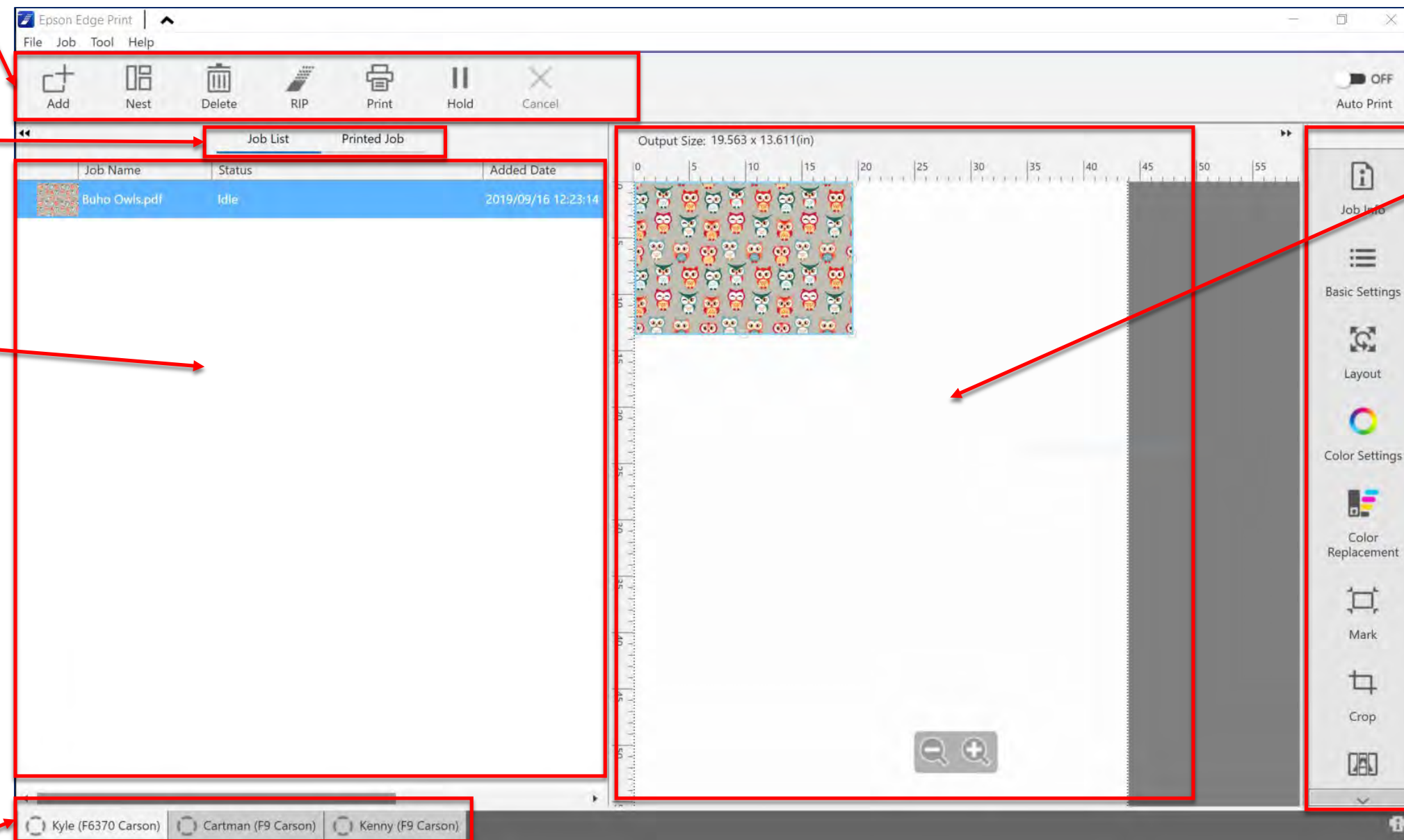
User Interface Overview

Job Tool Bar
Top level controls for print jobs

List Switch
Switch between Active and Past jobs

Job List
Thumbnail, Name, Active Status

Printer List
Up to 4 Printers can be active
Icon displays printer status:
Idle, Printing, Warning, Error, or Offline



Preview Area
Visual display as it will be printed on paper

Job Settings Menu
Control specific print job settings

Epson Edge Print

Starting a New Print Job

Add a Job

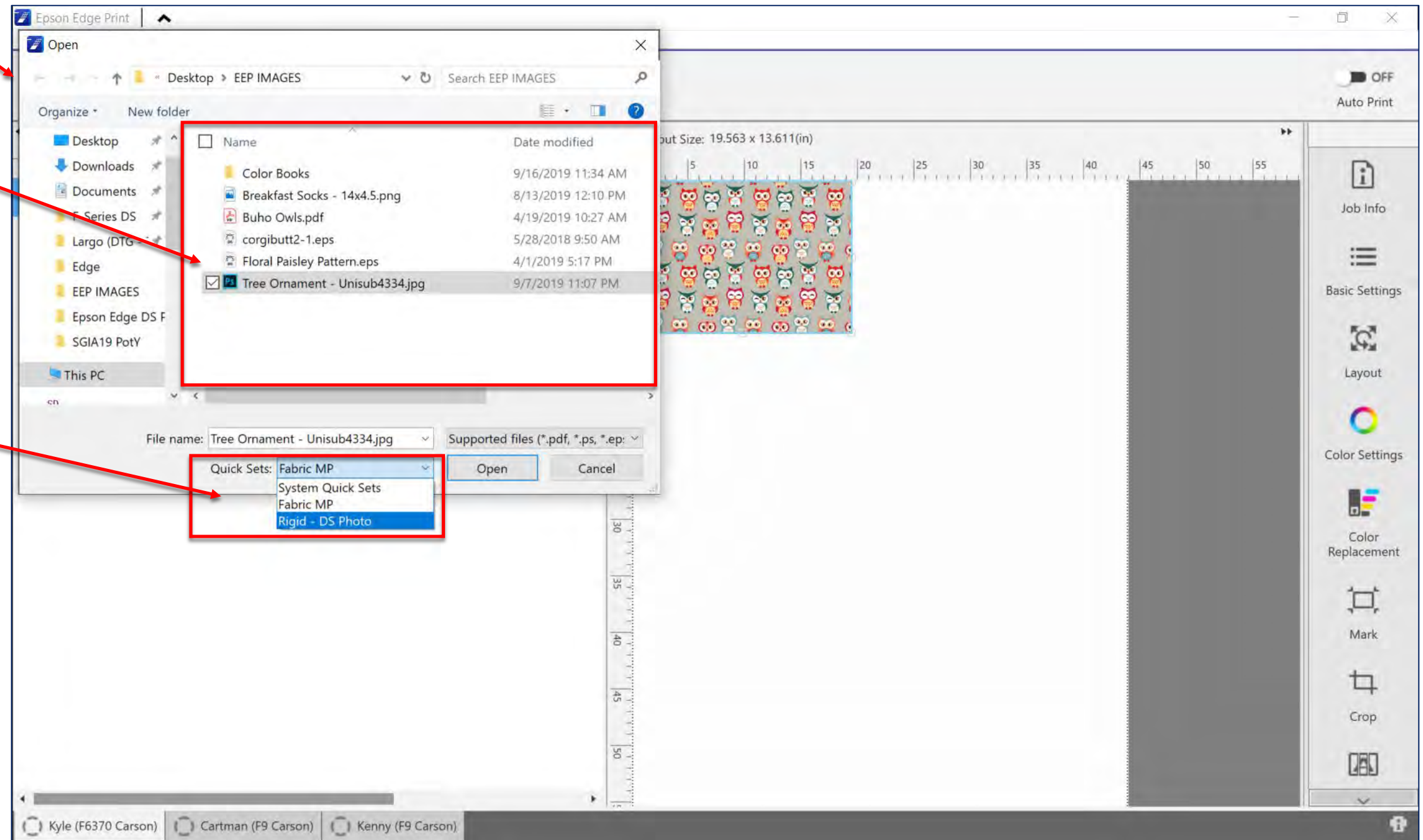
Click "Add" Icon, or choose File->Add to Job List...

Select File to Print

Supported Formats: PDF, PS, EPS, TIF, JPG, PNG, and CALS

Select a Print Mode Quick Set

Quick Sets will apply Preset Settings to the Job
(i.e Fabric or Rigid Print Application)

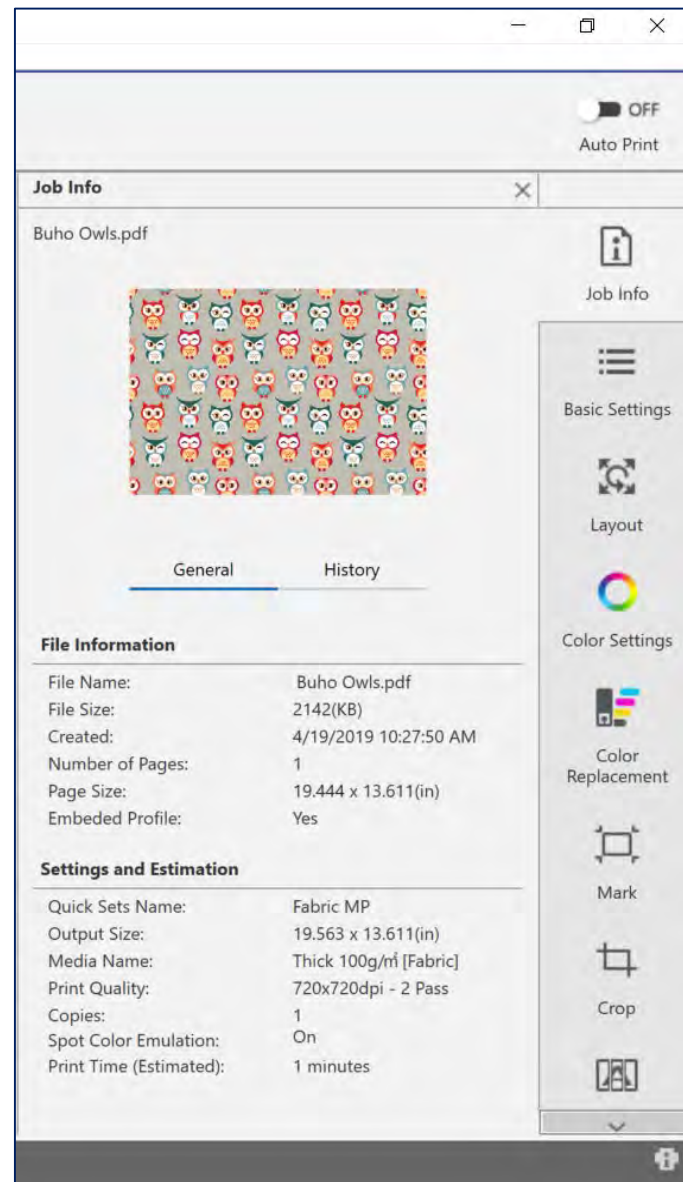


Epson Edge Print

Job Settings

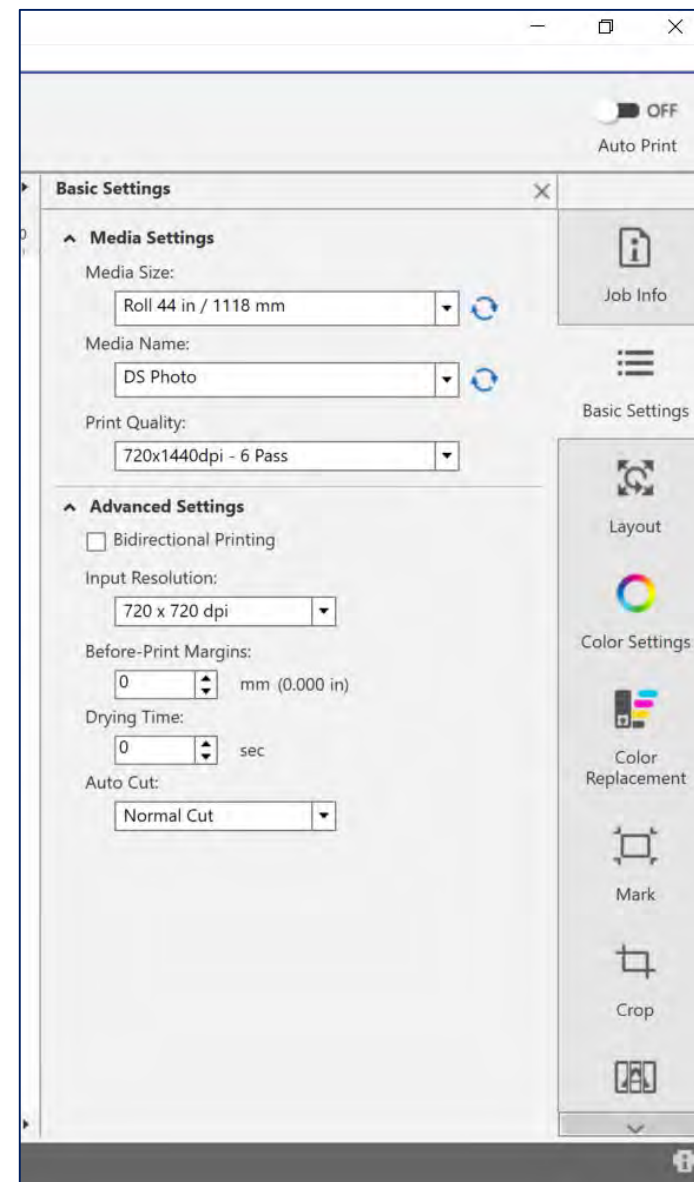
Job Information

Print Size, Media Type, Print Mode, Print Time Estimate



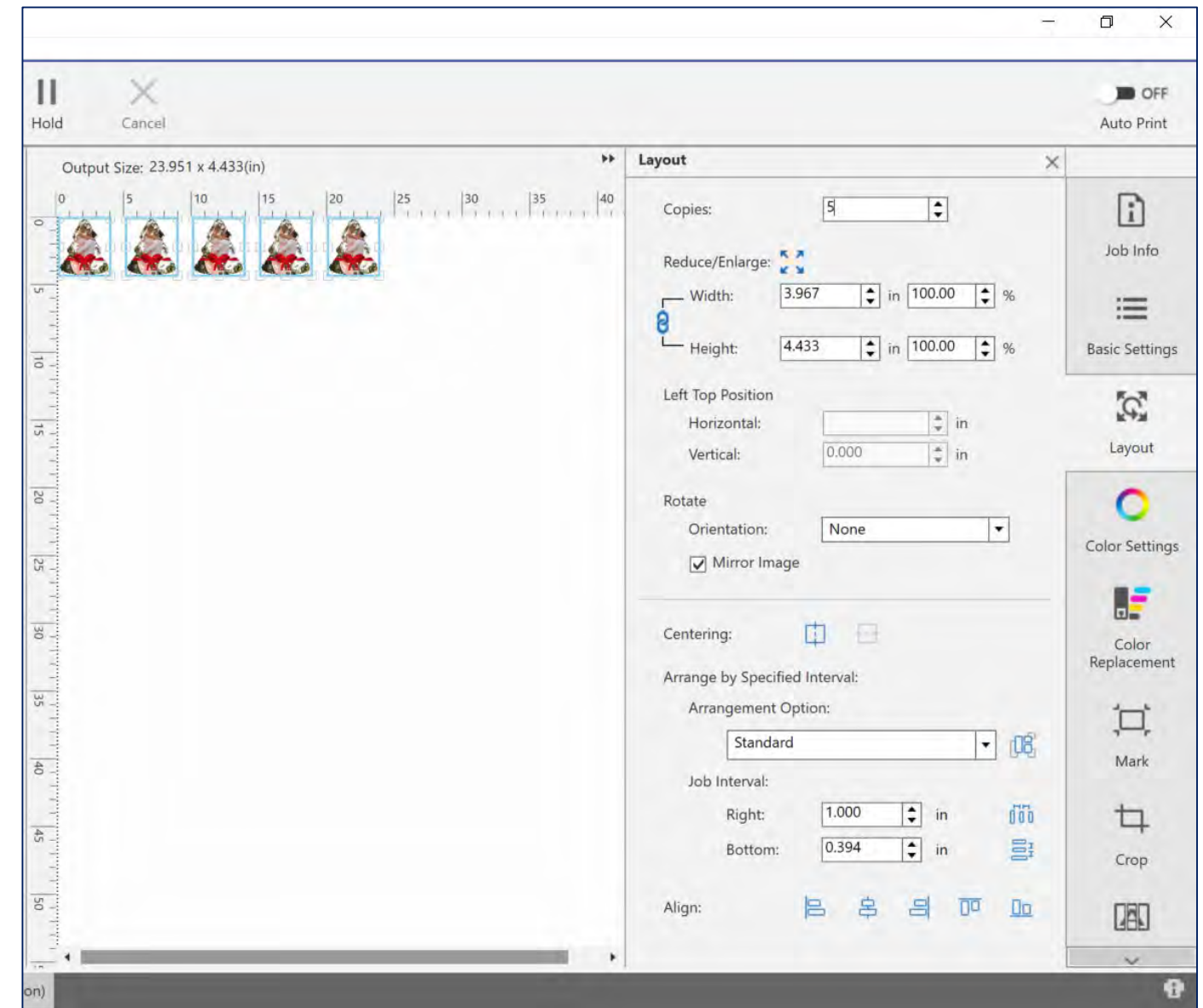
Basic Settings

Control over media and printer settings



Layout Settings

Add Copies, Scale, Position, Rotate, and Arrange Prints

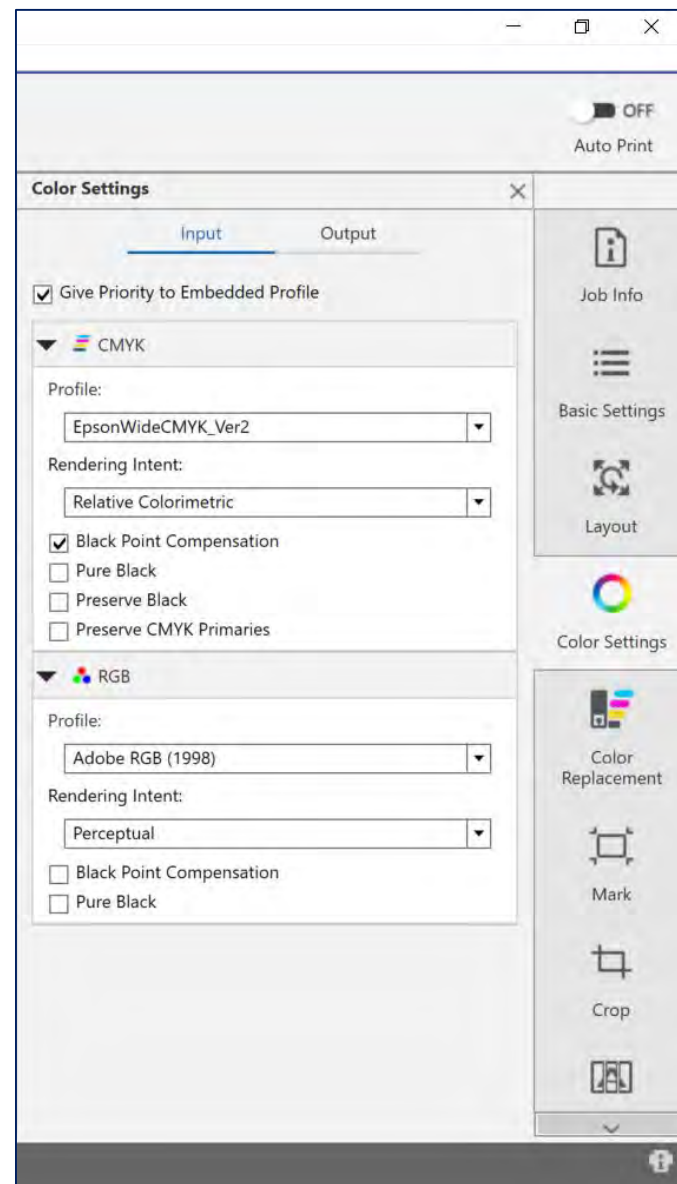


Epson Edge Print

Job Settings continued

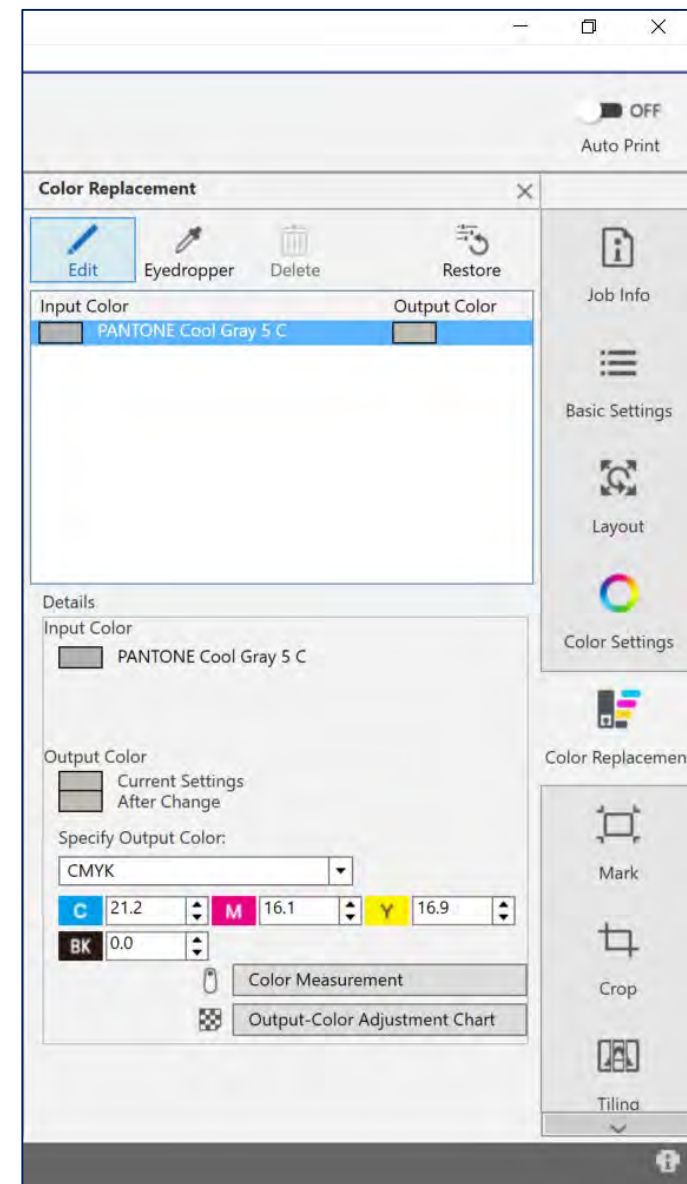
Color Settings

Control Input and Output Color Management Settings



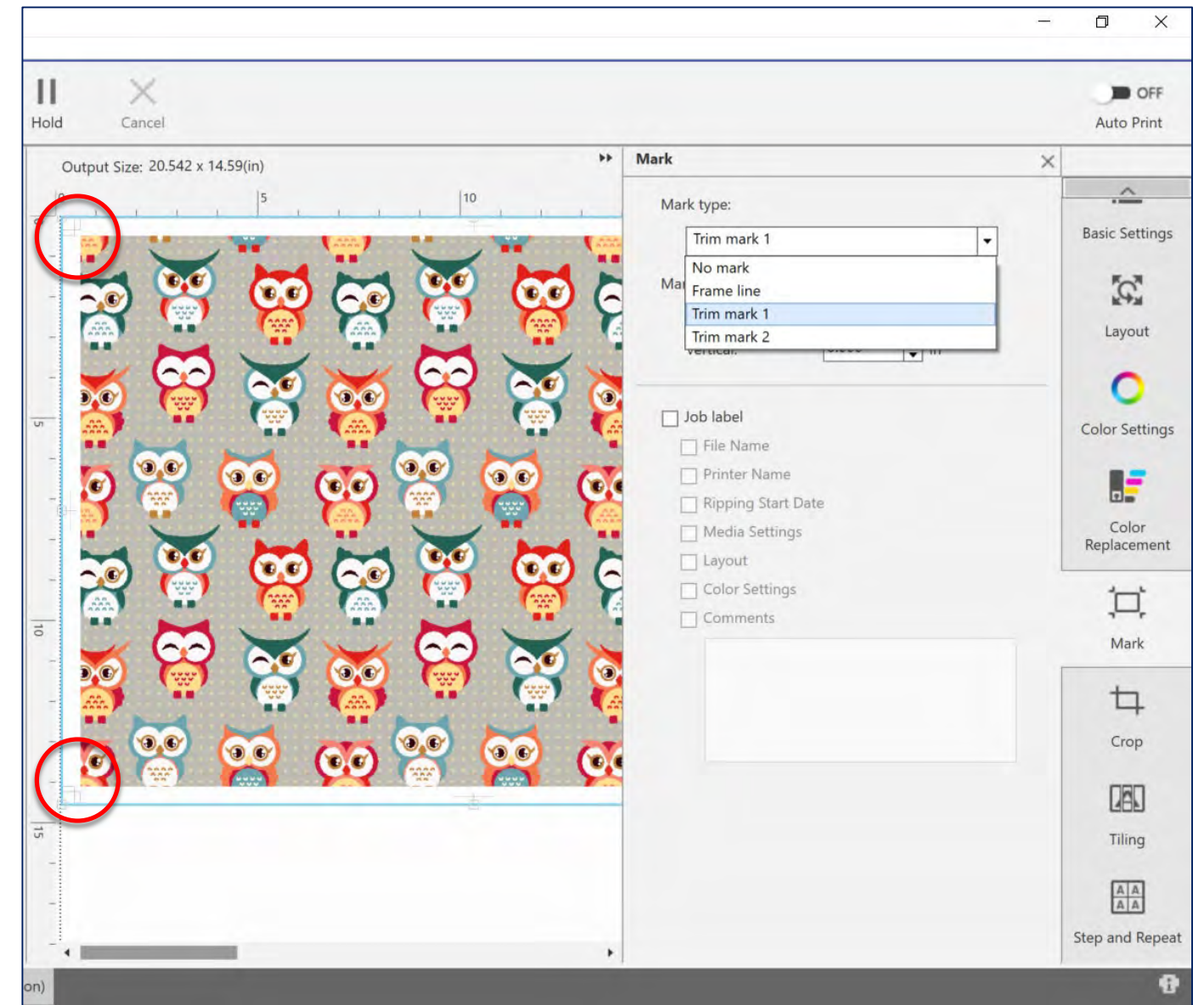
Color Replacement

Control Spot Colors and Sampled Colors in Image



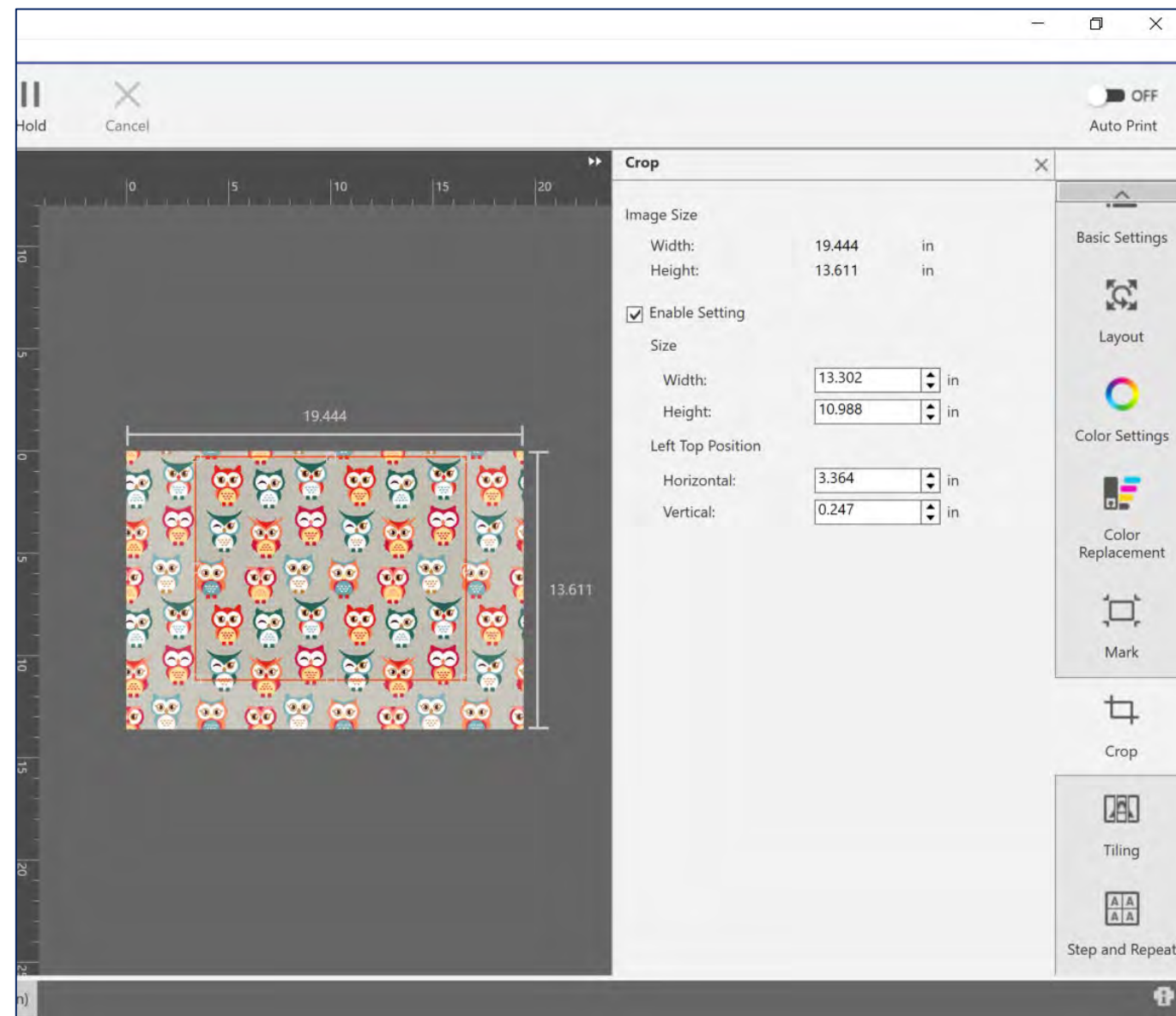
Print Marks

Select from 3 different print cut mark patterns, or select no marks



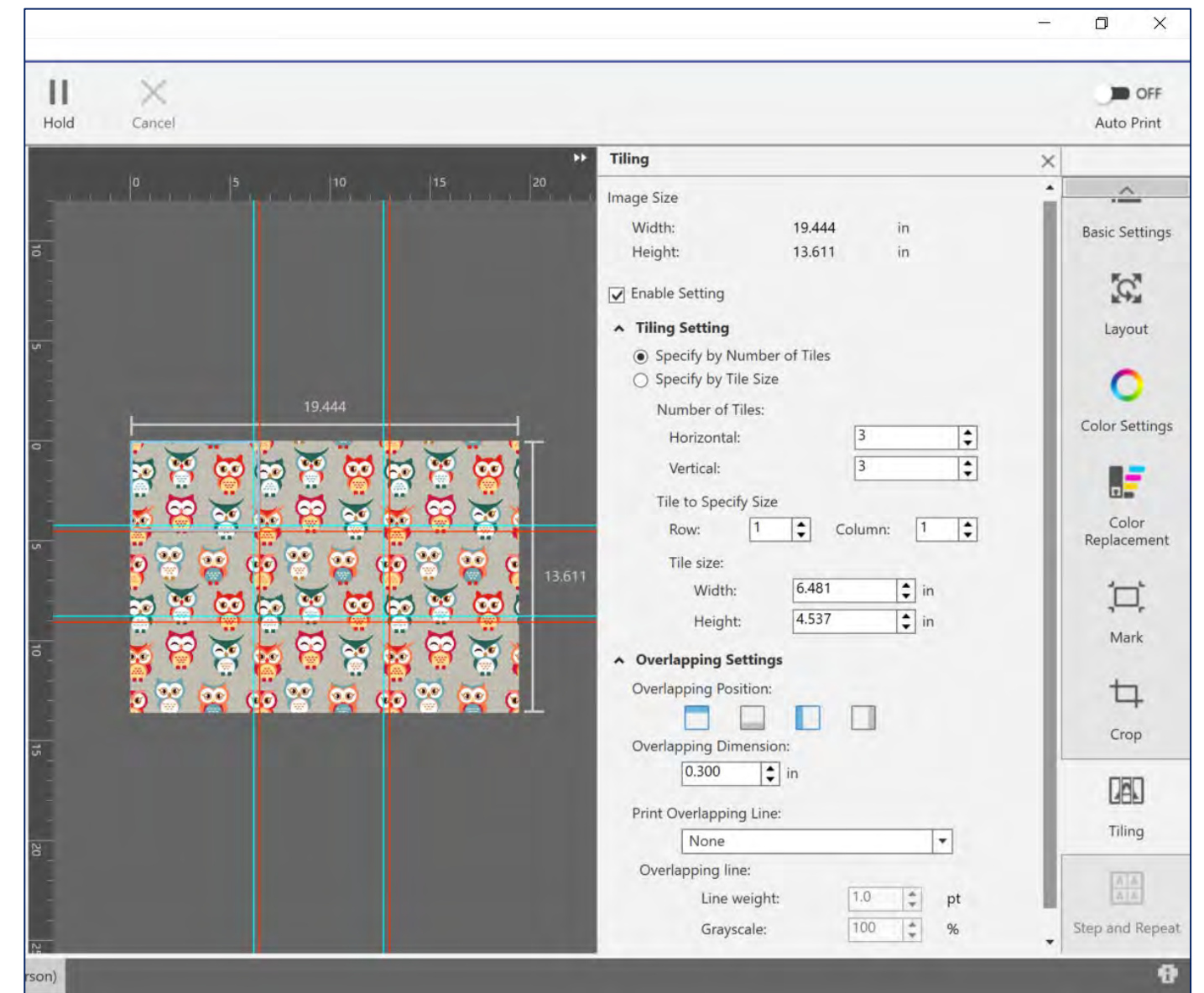
Crop Settings

Trim image to desired print area



Tiling Settings

When printing images larger than the print media, control tile size and overlap parameters



Epson Edge Print

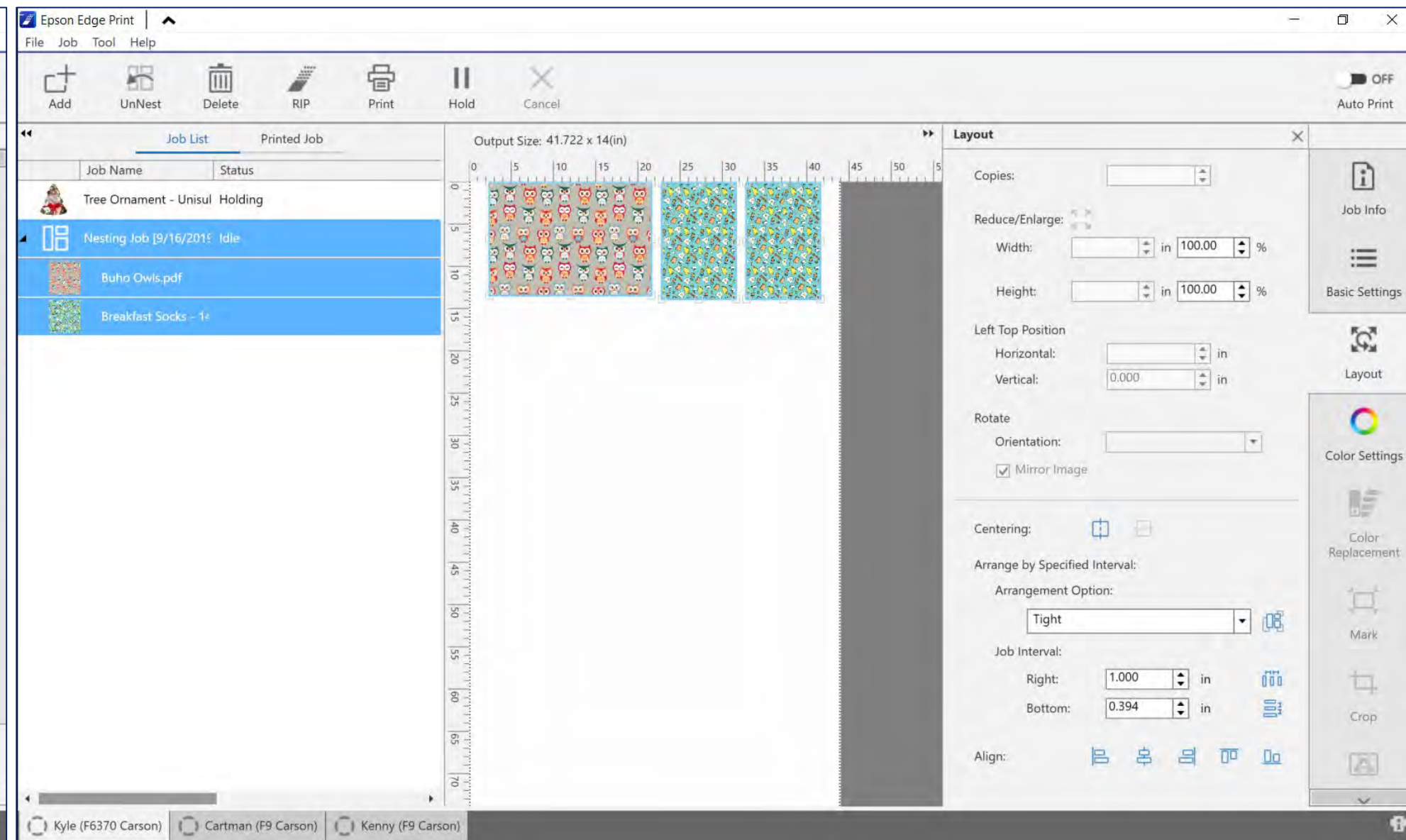
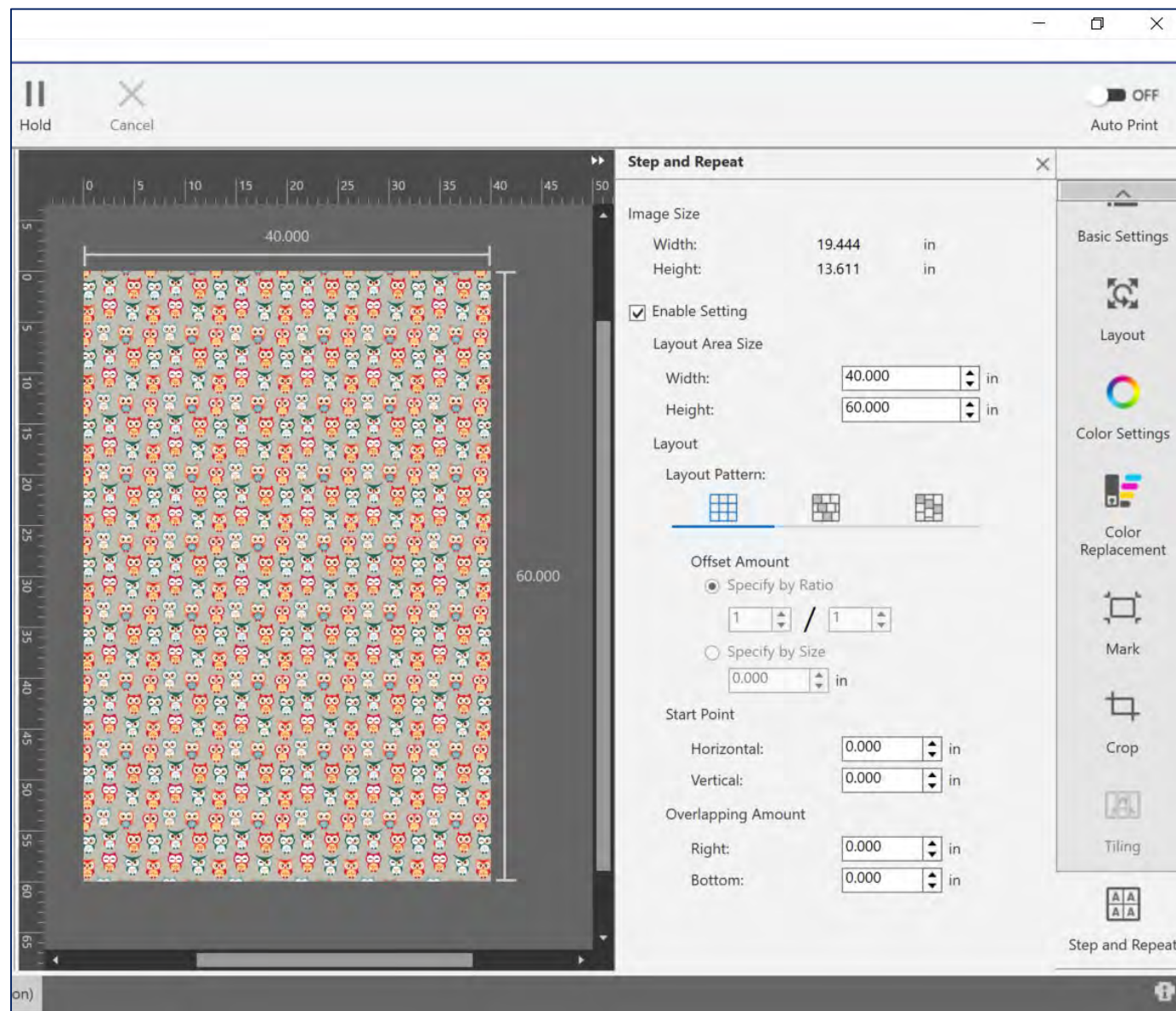
Job Settings continued

Step and Repeat Settings

Specify desired width & length of material, and pattern layout settings. Pattern will auto repeat.

Job Nesting

Multiple jobs can be nested together on the same print job. Nested print settings will override individual job settings



Epson Edge Print

Software Preferences

The screenshot shows the 'Preferences' dialog box with a sidebar on the left and a main content area on the right. The sidebar contains five categories: General, RIP Server, Printer, Hot Folder, and License. Each category is highlighted with a red box and a red arrow pointing to its corresponding text description on the left. The main content area shows a table with one row of data under the 'Hot Folder' category.

General Preferences
Set Language and preferred unit of measure

RIP Server
Control Maximum Memory Used and Job Storage settings

Printers
Register up to 4 unique printers. Each device will appear as a unique tab

Hot Folder
Register a Printer and Quick Set to a specific file folder.
Each printer supports multiple hot folders (i.e. "F6370 Rigid" and "F6370 Fabric")

License
Add or Delete License Codes.
Deleting the License will allow the license to be reused on a different computer

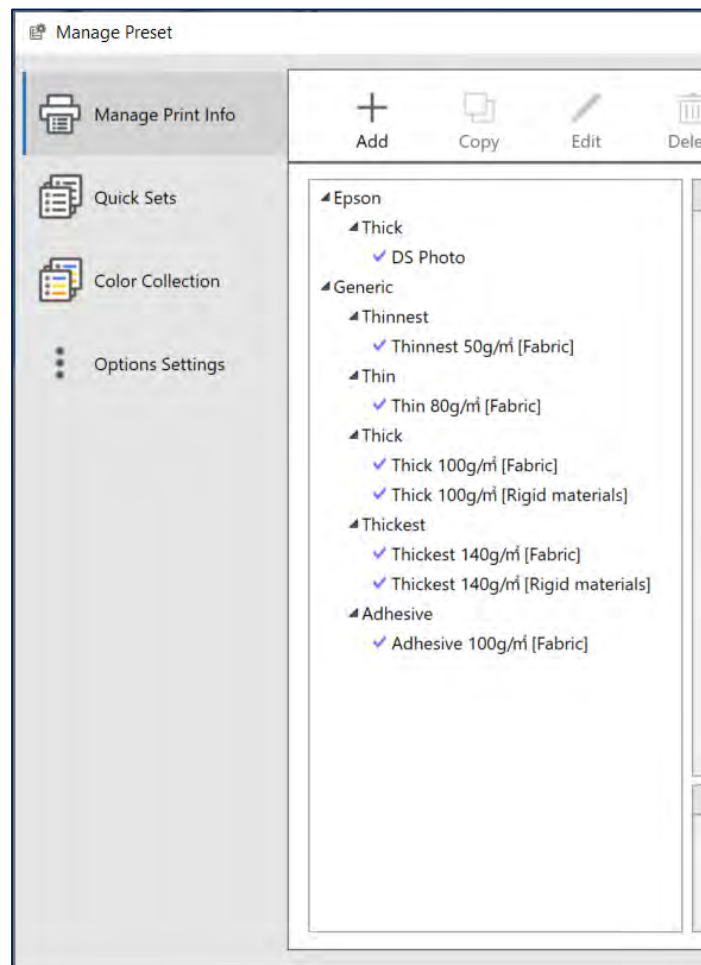
Enabl	Folder Name	Folder Path	Output Printer	Quick Sets Name
<input checked="" type="checkbox"/>	F63 HotFolder	C:\Users\A3Lab\Desktop\F63	Kyle (F6370 Carson)	Fabric MP

Epson Edge Print

Software Presets

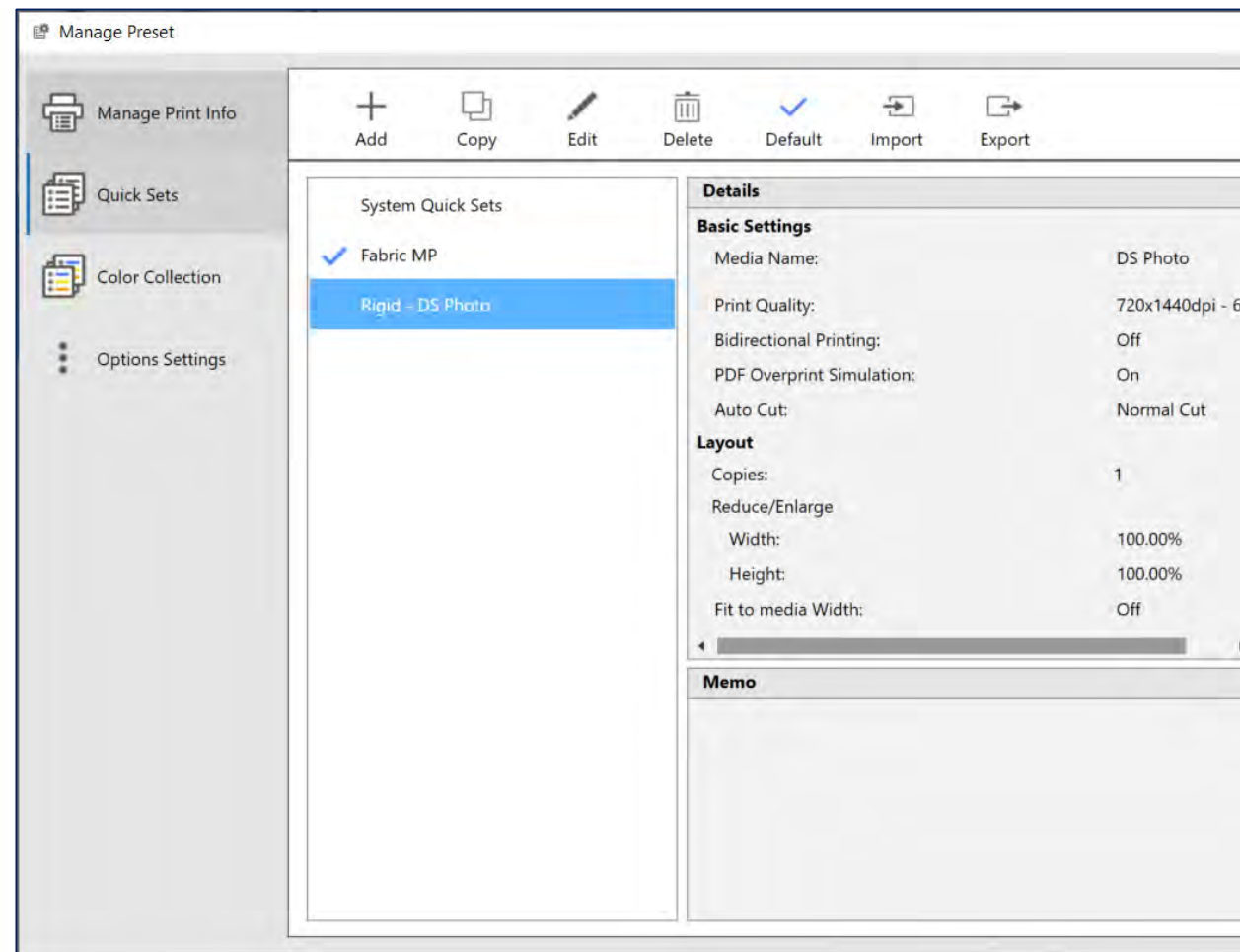
Printer Information

Add Media Types (Import EMX, EPML, or New)
Export Print Media Files to use with Other Edge Print servers



Quick Sets

Quick Sets are preset collection of job settings.
Creating a Quick Set with frequently used settings will save users time and reduce errors.



Color Collection

Supports Custom Color Library and Adobe Color Book Libraries (i.e. Pantone, TOYO)
Import and Export to other Edge Print servers. Easily generate physical color book samples

