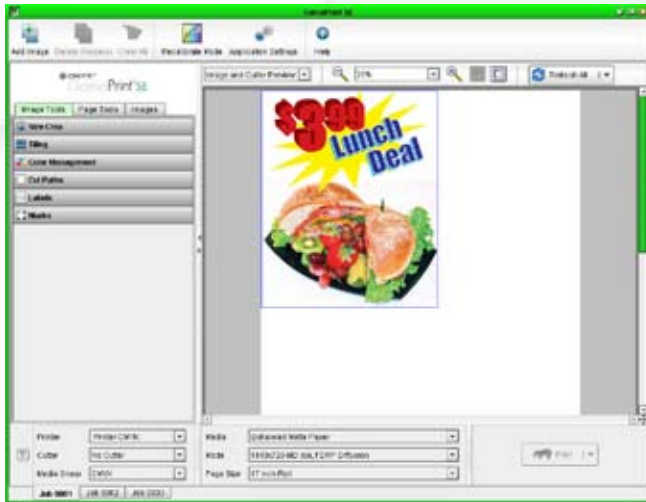




GamaPrint™

Product Overview

ONYX GamaPrint software RIP is specifically designed to make large-format printing easy, while still maximizing printer performance. GamaPrint is built upon the award-winning ONYX® color technology and robust production-level RIP engine. In addition to PDF and PostScript®, GamaPrint supports TIFF, JPEG and JPEG 2000 files and is reliable with PostScript® and PDF language.



GamaPrint Easy-to-use Interface

Benefits

GamaPrint offers an easy WYSIWYG graphical user interface for a simple print workflow. The workflow includes color management and a wide variety of convenient image layout, edit and print functions. The workflow toolset also includes sizing, cropping, color correction, contour cutting and nesting. Users can quickly open supported files created with their favorite design applications and produce spectacular output on their printer.

GamaPrint includes a fully-licensed PANTONE® Spot Color Matching library, making spot color matching easy and accurate. Other color features include color management presets, separate input profile settings for raster and vector images and embedded ICC profile support. GamaPrint also provides color-accurate image previews on screen, keeping ink and media usage to a minimum.

Features

GamaPrint SE is the lower-cost version of the product, which supports printing to one printer. The list of drivers includes most large-format indoor inkjet printers as well as several entry-level solvent printers.

GamaPrint Pro is a higher-end version, which includes the RIP-Queue application and can print to two printers simultaneously. The list of drivers includes both indoor and outdoor large-format inkjet printers. It also includes Media Manager for recalibration and media management.

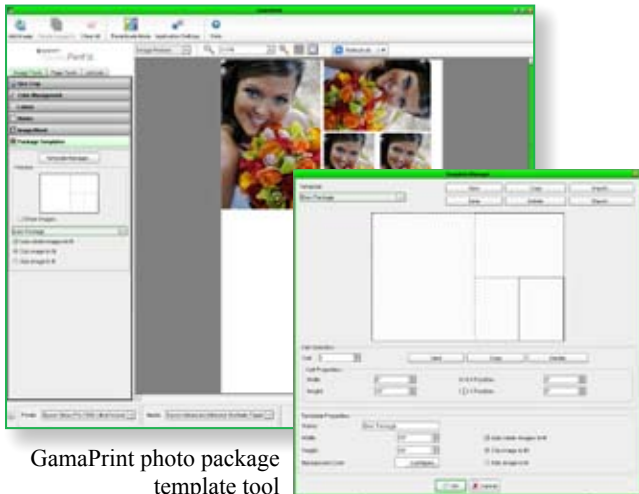
GamaPrint Features	SE	Pro
Active Printers	1	2
Visually Size, Crop & Rotate Images	✓	✓
Basic Color Correction	✓	✓
Basic Use of ICC profiles	✓	✓
Manual Job Tiling	✓	✓
Manual Job Nesting	✓	✓
Raster File RIP	✓	✓
PDF/PostScript RIP	✓	✓
Basic Crop Marks	✓	✓
Manual PANTONE® Color Replacement	✓	✓
Multiple Print Frame List	✓	✓
Image List	✓	✓
Photo Package Templates	✓	✓
Custom Crop Marks	✓	✓
Contour Cut to Print/Cut Hybrid device	✓	✓
Print, then Contour Cut Workflow	✓	✓
Send Jobs to CUT-Server	✓	✓
Create Basic Contour Path Tool	✓	✓
Background RIP processing	✓	✓
Online AutoUpdate	✓	✓
Basic Media Recalibration	✓	✓
Color-accurate On-screen Print Previews	✓	✓
Disproportional Scaling	✓	✓
Media Manager		✓
RIP-Queue Application		✓

* Additional features can not be added.
For more features, product must be upgraded.

Photo Packaging

With the photo package template tool, you can easily create professional photo packages. Simply select an image and choose a template. The software automatically sizes and rotates the image to complete the photo package.

The software allows you to select from one of 10 default package templates. Or with the included Template Manager Tool you can create and define your own custom photo packages for specific uses.



GamaPrint photo package template tool

Optimal System Requirements

Supported OS

Windows Vista*
Windows XP Pro with the latest service pack
Windows 2000 Pro / Server with the latest service pack

CPU

Intel Pentium IV / Xeon 3+ GHz, Athlon 64 / Opteron 2+ GHz

Storage

Two 80 GB Hard Drives
1 GB RAM, 2 GB Recommended

Video

1280 x 1024 16-bit Color

Hardware

USB Port (for security key)
DVD-ROM Drive

** Some limitations may exist in printers and measurement devices that are not supported by Windows Vista. For a complete list of known issues with Windows Vista visit www.onyxgfx.com/vista.html.*

Supported File Types

Raster File Types Supported—*TIFF, TIFF/IT, 8 Bit & 16 Bit TIFF, 4 GB TIFF, JPEG 2000, Native PhotoShop (PSD), Kodak PhotoCD, ER Mapper, MrSid, JPEG, Targa, Scitex CT, DIB, GIF, PCX, BMP*

TIFF Formats Supported—*RGB, CMYK, Lab, CMYKOG, CMYKOB, CMYKGB, CMYKOGB, CMYKRGB, CMYK+Spot channels*

PostScript & PDF File Support—*PS & EPS Level 2 & 3, PDF*

Languages Included—*English, Spanish, French, German, Italian, Czech, Chinese (Simplified and Traditional), Japanese, Korean, Dutch, Polish, Portuguese, Hungarian, Russian, Turkish, Greek*

GamaPrint SE Supported Printers:

Canon 6000, 7000, 8000, and 9000 Series, iPF 5000, 8000 & 9000 Series

Encad CADJet, VinylJet, 1000i

HP Designjet Z2100, Z3100, Z6100, 5000, 5500, 8000s series

Epson 3800, 4800, 7800, 9800, 7880, 9880, 11880

Graphtec 2000 Series, JS300 Series

Mimaki JV2, PV Series, 75SP, JV-33

Mutoh 6100 Series, Rockhopper 38, Draft Station, ValueJet 1204

Roland Hi-Fi JET FJ42, FJ52

Roland Hi-Fi Jet Pro II FJ and CJ Series

VersaCamm SP-300, SP-300V, SP-540

** Additional drivers cannot be added. For more drivers product must be upgraded.*

GamaPrint Pro Supported Printers:

Canon 6000, 7000, 8000, and 9000 Series, iPF 5000, 8000 & 9000 Series

Encad CADJet, VinylJet and 1000i

Epson 3800, 4800, 7800, 9800, 7880, 9880, 11880

Graphtec 2000 Series, JS300 Series

HP Designjet Z2100, Z3100, Z6100, 5000, 5500, 8000s, 9000s, 10000s series

Mimaki JV2, PV Series, 75SP, JV3 22, 160/GP, JV3-250SP, JV4, JV5/UJF/UJV, JV-33

Mutoh Rockhopper 38, Draft Station

Mutoh Rockhopper II 50 & 64, III 65, 2Kplus, Toucan LT, Spitfire 65, ValueJet 1204, 1604

Mutoh Rockhopper II 87, III 90, Spitfire 90 100 ValueJet 2600, Mutoh Toucan 64, 87, Osprey and ValueLine Series

Roland VersaCamm SP-300, SP-300V, SP-540

Roland Hi-Fi JET FJ42, FJ52

Roland Hi-Fi Jet Pro II FJ and CJ Series

Roland Soljet Pro II SJ, SC Series, Pro II SJ-1000 EX Pro II V, AJ-1000, SJ-740, 740 EX, 745 EX

Seiko ColorPainter 64s and 100s, 64s Plus + Light

** Additional drivers cannot be added. For more drivers product must be upgraded.*

Upgrade Options

- GamaPrint SE can be upgraded to GamaPrint Pro and ONYX ProductionHouse 7

- GamaPrint Pro can be upgraded to ONYX ProductionHouse 7